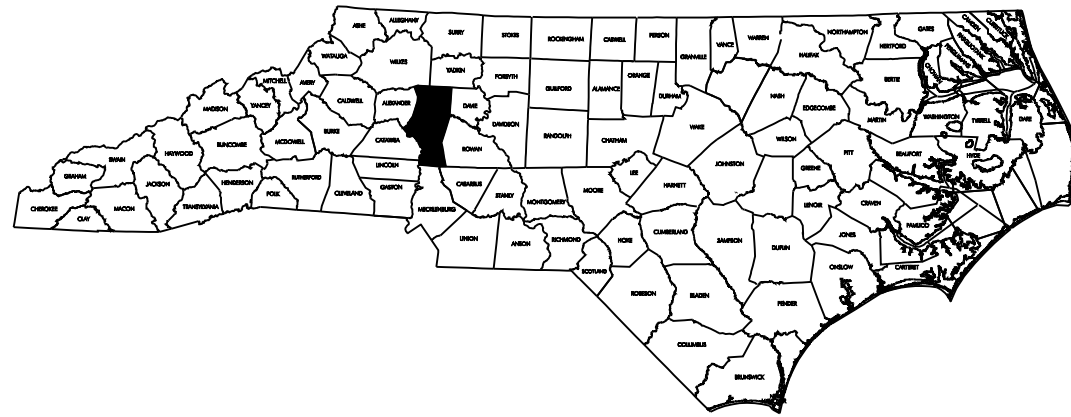


CONTRACT NO. D000013 TIP PROJECT: B-4700AB

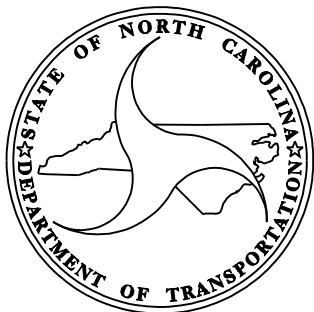
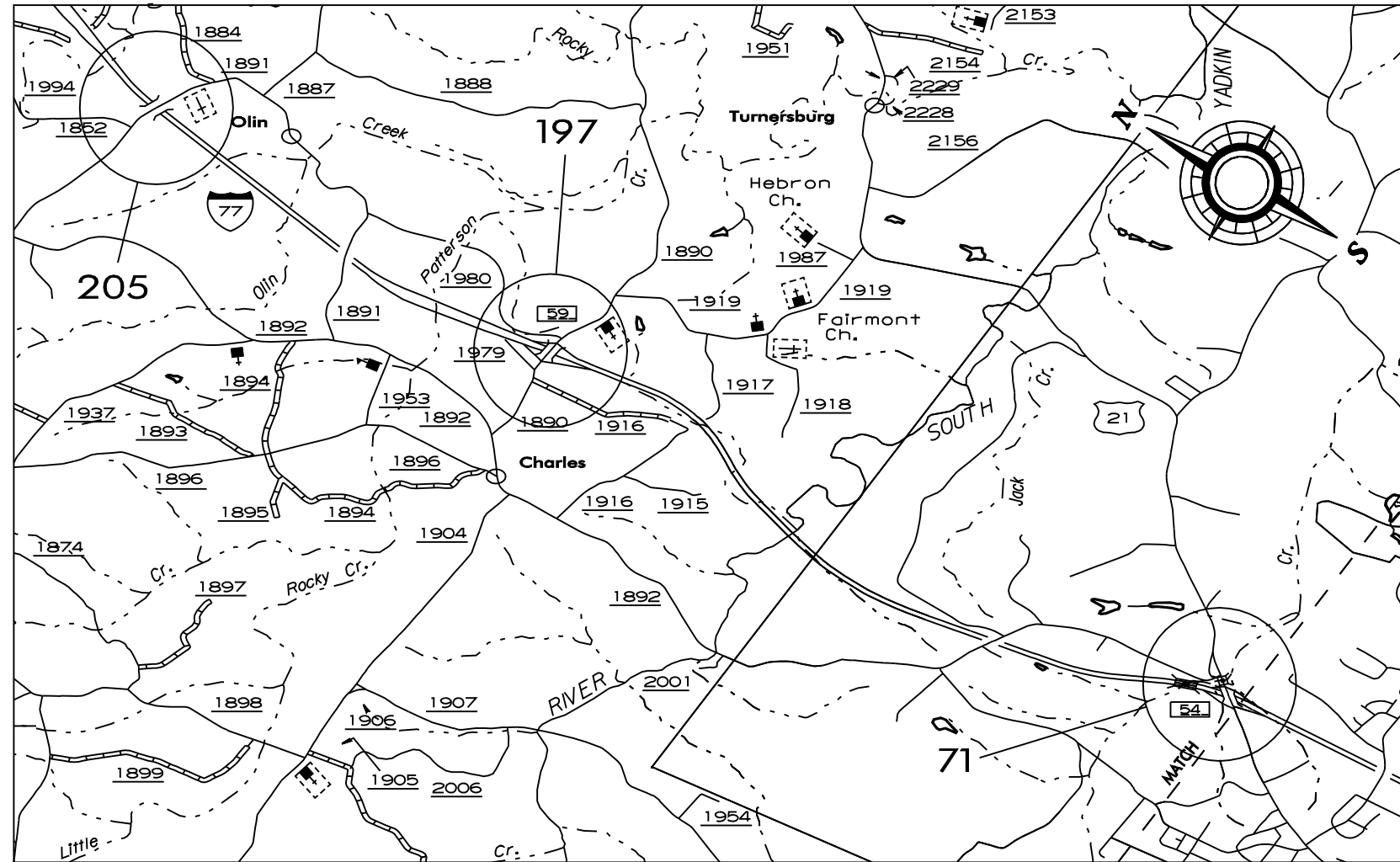


STATE OF NORTH CAROLINA
DIVISION OF HIGHWAYS

IREDELL COUNTY

STATE	STATE PROJECT REFERENCE NO.	SHEET NO.	TOTAL SHEETS
N.C.	B-4700AB	1	1
STATE PROJ. NO.	F.A. PROJ. NO.	DESCRIPTION	
36727.1.1	BRNHS-0005(504)	P.E.	
36727.3.27	BRNHS-0005(370)	CONST	

**LOCATION: US 21, SR 1890, SR 1891, ACROSS I 77
TYPE OF WORK: CLEANING & PAINTING OF
BRIDGE #71, #197 & #205 IN IREDELL COUNTY.**



DESIGN DATA

PROJECT LENGTH

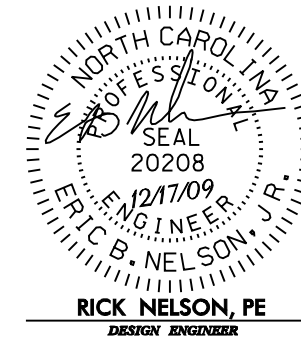
LENGTH STRUCTURE PROJECT = 7.60 MILE

Prepared In the Office of:
BRIDGE MANAGEMENT UNIT
NORTH CAROLINA DEPARTMENT OF TRANSPORTATION
2006 STANDARD SPECIFICATIONS

LETTING DATE:
DECEMBER 17, 2009

DAN HOLDERMAN, PE
STATE BRIDGE
MANAGEMENT ENGINEER

MIKE SUMMERS
BRIDGE MANAGEMENT
PROJECT MANAGER



RICK NELSON, PE
DESIGN ENGINEER

10/20/09
c:\tr\office\trafficcontrol\B-4700ab iredeall\tcp\plan sheets\B-4700AB_tcp_psh_01.dgn
gk-arageorge

WBS 36727.3.27

TIP PROJECT: B-4700AB

STATE PROJECT REFERENCE NO.	SHEET NO.
B-4700AB	TCP-1

STATE OF NORTH CAROLINA
DIVISION OF HIGHWAYS

**PLAN FOR PROPOSED
TRAFFIC CONTROL**

IREDELL COUNTY

LOCATION: BRIDGE NO.S 71, 197, AND 205.

TYPE OF WORK: TRAFFIC CONTROL FOR BRIDGE PAINTING

ROADWAY STANDARD DRAWINGS

THE FOLLOWING ROADWAY STANDARDS AS APPEAR IN "ROADWAY STANDARD DRAWINGS" - PROJECT SERVICES UNIT - N.C. DEPARTMENT OF TRANSPORTATION - RALEIGH, N.C., DATED JULY 2006 ARE APPLICABLE TO THIS PROJECT AND BY REFERENCE HEREBY ARE CONSIDERED A PART OF THESE PLANS:

STD. NO.	TITLE
1101.04	TEMPORARY SHOULDER CLOSURES
1101.11	TRAFFIC CONTROL DESIGN TABLES
1110.02	PORTABLE WORK ZONE SIGNS
1115.01	FLASHING ARROW PANELS
1130.01	DRUMS
1165.01	TRUCK MOUNTED IMPACT ATTENUATOR
1180.01	SKINNY-DRUM

INDEX OF SHEETS

SHEET NO.	TITLE
TCP-1	LIST OF APPLICABLE ROADWAY STANDARD DRAWINGS, LEGEND, AND INDEX OF SHEETS
TCP-2	GENERAL NOTES
TCP-3	VICINITY MAP AND PROJECT PHASING
TCP-4	DETAIL FOR RIGHT AND LEFT LANE CLOSURES FOR I-77
TCP-5	DETAIL FOR TREATMENT OF RIGHT LANE CLOSURES IN THE VICINITY OF EXIT RAMP.

LEGEND

GENERAL

- DIRECTION OF TRAFFIC FLOW
- NORTH ARROW
- WORK AREA

TRAFFIC CONTROL DEVICES

- TYPE III BARRICADE
- CONE
- DRUM SKINNY DRUM
- FLASHING ARROW PANEL (TYPE C)
- STATIONARY SIGN
- PORTABLE SIGN
- STATIONARY OR PORTABLE SIGN
- PORTABLE CONCRETE BARRIER
- TEMPORARY CRASH CUSHION
- CHANGEABLE MESSAGE SIGN
- TRUCK MOUNTED IMPACT ATTENUATOR (TMIA)
- POLICE
- FLAGGER

APPROVED:
DATE: 10/20/09

PLAN PREPARED BY:

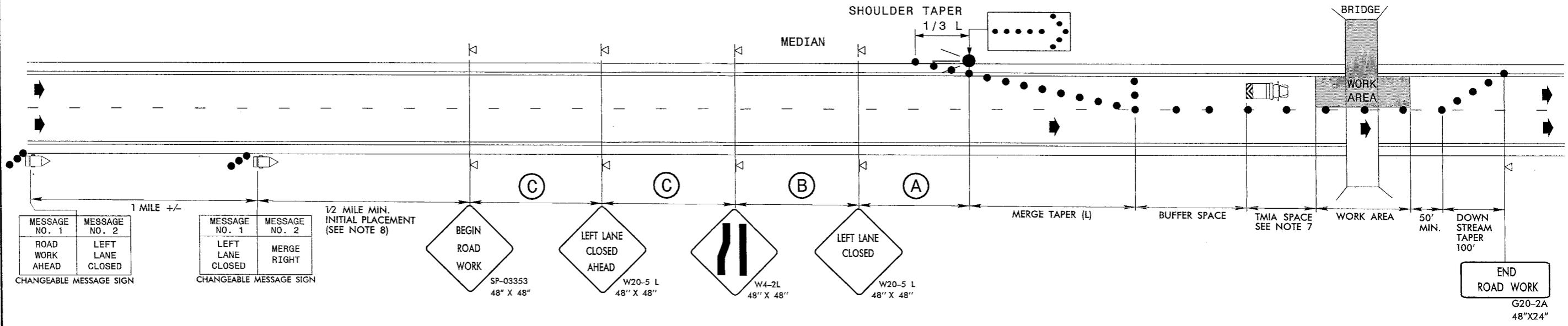


Stantec Consulting Services Inc.
Suite 300, 801 Jones Franklin Road
Raleigh, NC
27606
Tel. 919.851.6866
Fax. 919.851.7024
www.stantec.com

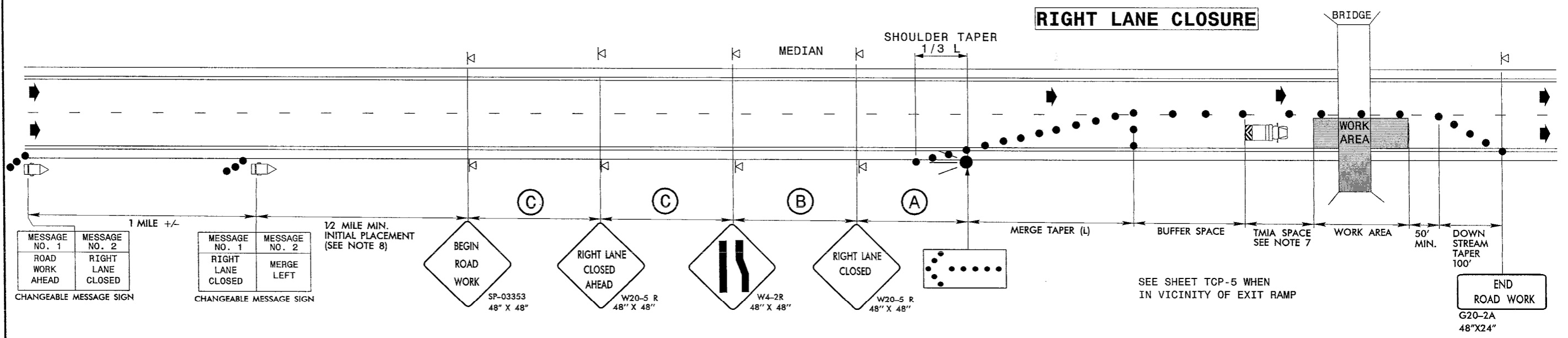
BETSY L. WATSON, PE **TRAFFIC CONTROL ENGINEER**
GEORGE KARAGEORGE **TRAFFIC CONTROL DESIGNER**

LEFT LANE CLOSURE

PROJECT REFERENCE NO.	SHEET NO.
B-4700AB	TCP-4



RIGHT LANE CLOSURE



NOTES

1. USE THIS DRAWING FOR LANE CLOSURES ALONG I-77 ASSOCIATED WITH ALL THREE BRIDGE LOCATIONS.
2. PLACE ARROW PANELS ON THE SHOULDER (PAVED OR UNPAVED). PLACE ARROW PANELS WITHIN THE TAPER IF SHOULDERS DO NOT EXIST. MEET THE REQUIREMENTS FOR STOPPING SIGHT DISTANCE AT THE ARROW PANEL LOCATION. IF NEEDED, EXTEND LANE CLOSURES AT THE BUFFER SPACE, SUCH THAT STOPPING SIGHT DISTANCE TO THE ARROW PANEL IS MET. (SEE STD. 1101.11 SHEET 2).
3. PLACE DRUMS IN TAPERS AT THE MAXIMUM SPACING EQUAL IN FEET TO THE POSTED SPEED LIMIT. PLACE DRUMS ALONG THE BUFFER SPACE AND WORK AREA AT THE MAXIMUM SPACING EQUAL IN FEET TO 2 TIMES THE POSTED SPEED LIMIT.
4. REFER TO STD. 1101.11 SHEETS 1 & 4, FOR "L" DISTANCE AND SIGN SPACING.
5. REFER TO SHEET TCP-5 FOR TREATMENT OF LANE CLOSURES THROUGH INTERCHANGES.
6. INSTALL LANE CLOSURES WITH THE TRAFFIC FLOW, BEGINNING WITH DEVICES ON THE UPSTREAM SIDE OF TRAFFIC. REMOVE LANE CLOSURES AGAINST THE TRAFFIC FLOW, BEGINNING WITH DEVICES ON THE DOWNSTREAM SIDE OF TRAFFIC.
7. TMIA'S ARE REQUIRED ONLY WHEN A BUFFER SPACE CANNOT BE ATTAINED, OR WHEN DIRECTED BY THE ENGINEER OR THE PLANS. WHEN USED, POSITION THE TMIA TO MAINTAIN A ROLL-AHEAD DISTANCE AS RECOMMENDED BY THE MANUFACTURER.
8. PLACE CHANGEABLE MESSAGE SIGN (CMS) ON THE OUTSIDE OF THE TRAVELWAY AS DIRECTED BY THE ENGINEER. PLACE CMS APPROXIMATELY 1/2 MILE IN ADVANCE OF THE W20-5 SIGNS. IF TRAFFIC BACKS UP TO WHERE THE CMS IS INITIALLY PLACED, RELOCATE CMS 1/2 MILE FROM ANTICIPATED BACKUP. CONTINUE TO MONITOR TRAFFIC AND MOVE CMS APPROXIMATELY 1/2 MILE IN CONJUNCTION WITH ANTICIPATED BACKUP.

10/19/2009 10:47:00am \\tcp\plan_sheets\B-4700AB_tcp-psht_04.dgn
 gk or sgeor:ge

Stantec Consulting Services Inc.
 Suite 300, 801 Jones Franklin Road
 Raleigh, NC 27608
 Tel. 919.851.8866
 Fax. 919.851.7024
 www.stantec.com

SEAL

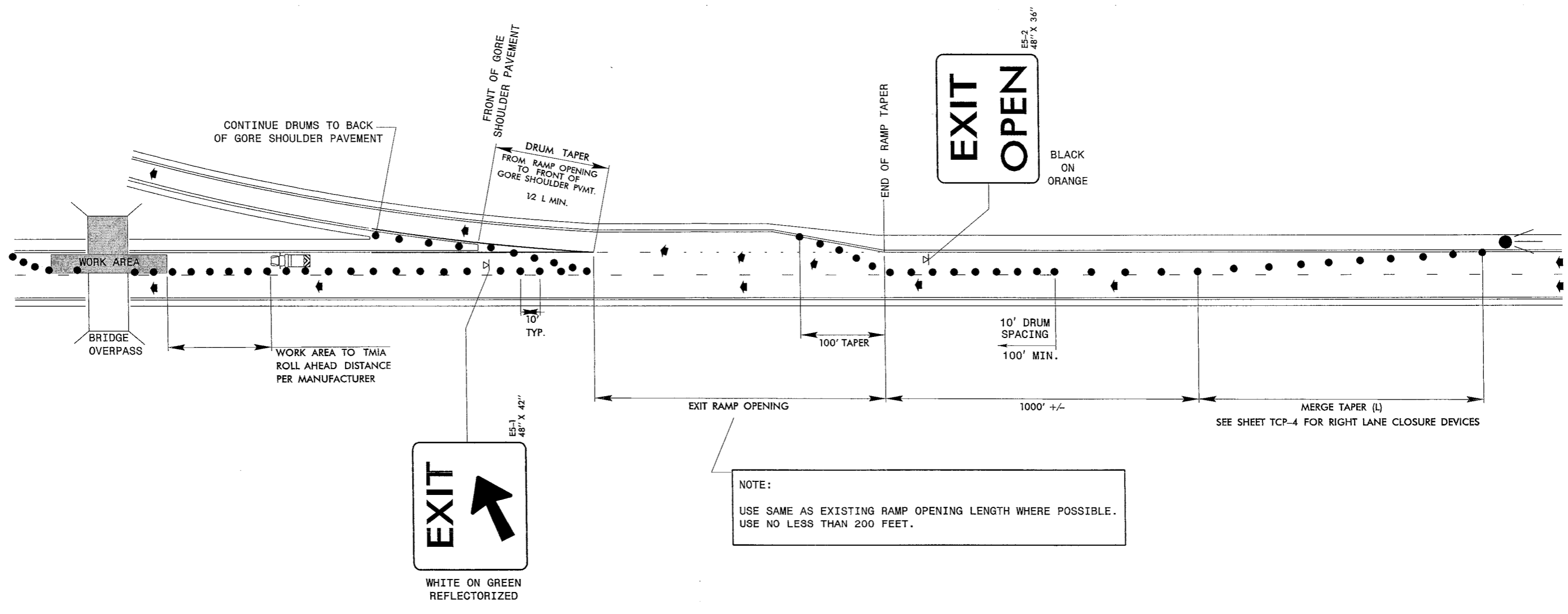
Michael Watson
 10/20/09

SIGNATURE DATE

TEMPORARY LANE CLOSURES ON I-77

SCALE:	NONE		<table border="1"> <tr> <th colspan="2">REVISIONS</th> </tr> <tr> <td> </td> <td> </td> </tr> <tr> <td> </td> <td> </td> </tr> <tr> <td> </td> <td> </td> </tr> </table>	REVISIONS							
REVISIONS											
DATE:	SEPT. 2009										
DWG. BY:	GK										
DESIGN BY:	GK										
REVIEWED BY:	BLW	CADD FILE									

**TYPICAL
RIGHT LANE CLOSURE
THROUGH VICINITY OF EXIT RAMP**



- NOTES
1. USE THE ABOVE DETAIL IN CONJUNCTION WITH A RIGHT LANE CLOSURE AS SHOWN ON SHEET TCP-4.
 2. MOUNT EXIT SIGN(E5-1) AND EXIT OPEN SIGN(E5-2) A MINIMUM OF 7 FEET FROM THE PAVEMENT SURFACE TO THE BOTTOM OF THE SIGN.
 3. REFER TO ROADWAY STANDARD DRAWING 1101.11 SHEETS 1, 2 & 4 FOR TRAFFIC CONTROL DESIGN TABLES.
 4. USE THE ABOVE DETAIL FOR EXIT RAMPS IN ADVANCE OF BRIDGES 71 AND 197.

10/28/2009 s:\control\B-4700AB\redell\top\plan sheets\B-4700AB_tcp_psh_05.dgn gkr/george

<p>Stantec Stantec Consulting Services Inc. Suite 300, 801 Jones Franklin Road Raleigh, NC 27606 Tel. 919.851.6868 Fax. 919.851.7024 www.stantec.com</p>	<p>SEAL</p> <p><i>L. W. Watson</i> 10/20/09</p>	<p>TYPICAL RIGHT LANE CLOSURE THROUGH VICINITY OF EXIT RAMP</p>					
		<p>SCALE: NONE</p> <p>DATE: SEPT. 2009</p> <p>DWG. BY: GK</p> <p>DESIGN BY: GK</p> <p>REVIEWED BY: BLW</p>	<p>REVISIONS</p> <table border="1"> <tr><td> </td><td> </td></tr> <tr><td> </td><td> </td></tr> <tr><td> </td><td> </td></tr> </table>				